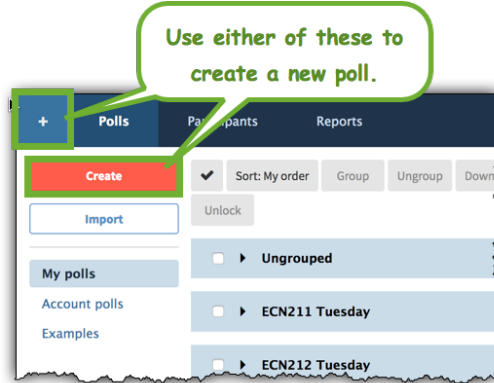
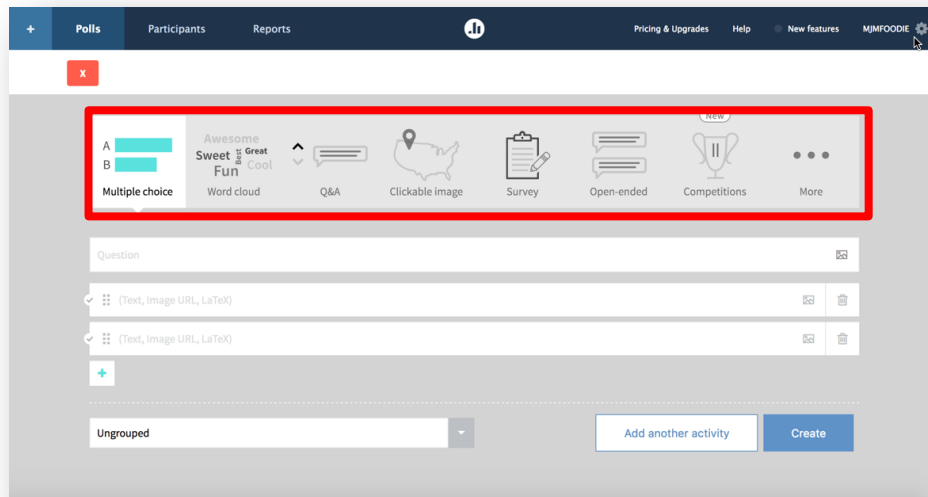


HOW TO CREATE A POLL USING POLLEVERYWHERE (2018 update)

1. Log in to <http://polleverywhere.com>. In the upper left-hand corner, click either the “+” or “Create” button. A box will pop up for you to enter your poll question:

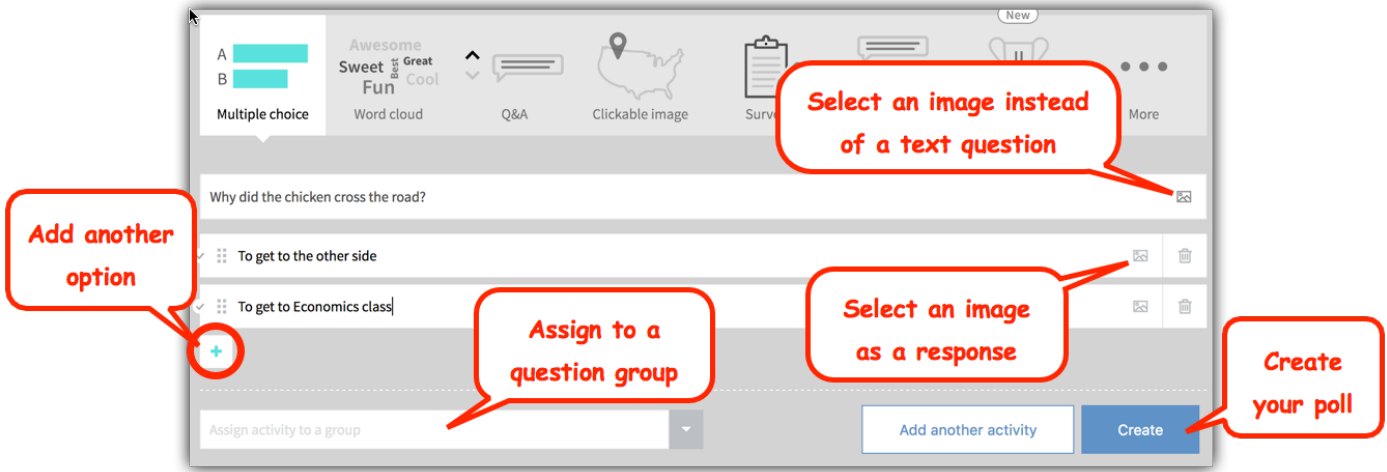


2. You will see many poll option types:



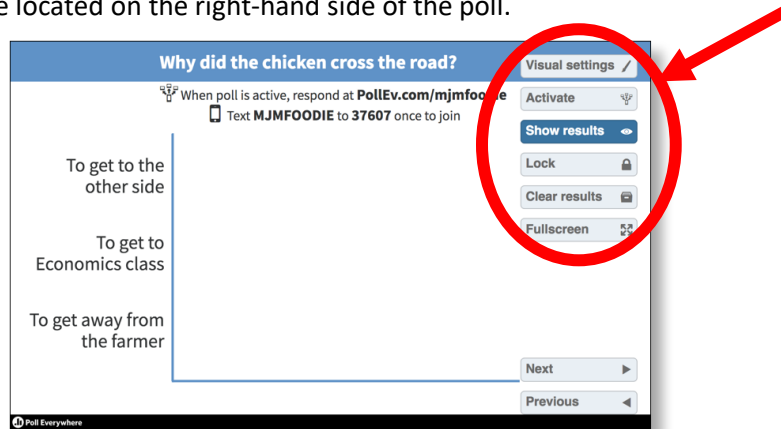
<p>Multiple choice</p>	<p>Q&A</p>	<p>Open-ended</p>	<p>More</p>
<p>Word cloud</p>	<p>Clickable image</p>	<p>Competitions</p>	<p>“More” is largely activity templates that employ the types of polls already covered:</p> <ul style="list-style-type: none"> • Donut charts • Icebreaker • Upvote • Leaderboard • Emotion scale • Assign teams • Discussion • Brainstorm • Priority ranking • Select on map
<p>Competitions</p>	<p>More</p>	<p>Competitions</p>	

- Once you have selected your question type, enter your question. For this example, I'll select Multiple Choice:
 - Under Multiple Choice, the default is to have two options, but it's easy to add more by using the "+" button.
 - Another feature of PollEverywhere is the ability to use images as voting options, rather than only verbal options (I won't be using that feature for this example, but go ahead and try it for yourself!).

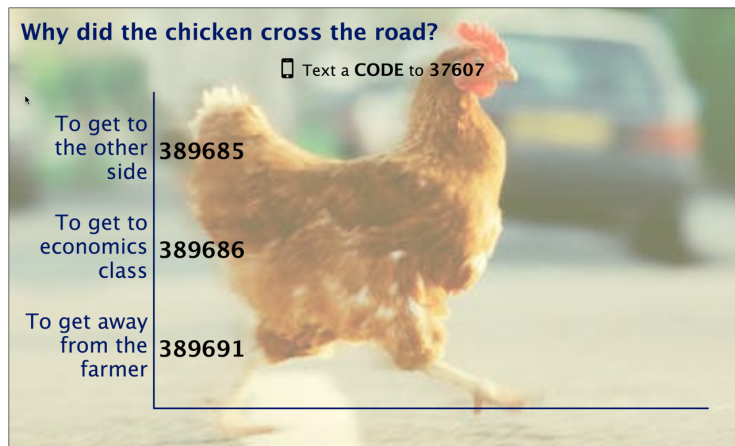


When your poll is ready, just click the blue "Create" button.

- That's it – your poll is ready to launch. If, however, you want to polish the look of the poll, you can click the settings buttons that are located on the right-hand side of the poll.



Using the Settings, I was able to adjust the sizes of the various text components, and the background of the poll:



My poll is now ready to go!!